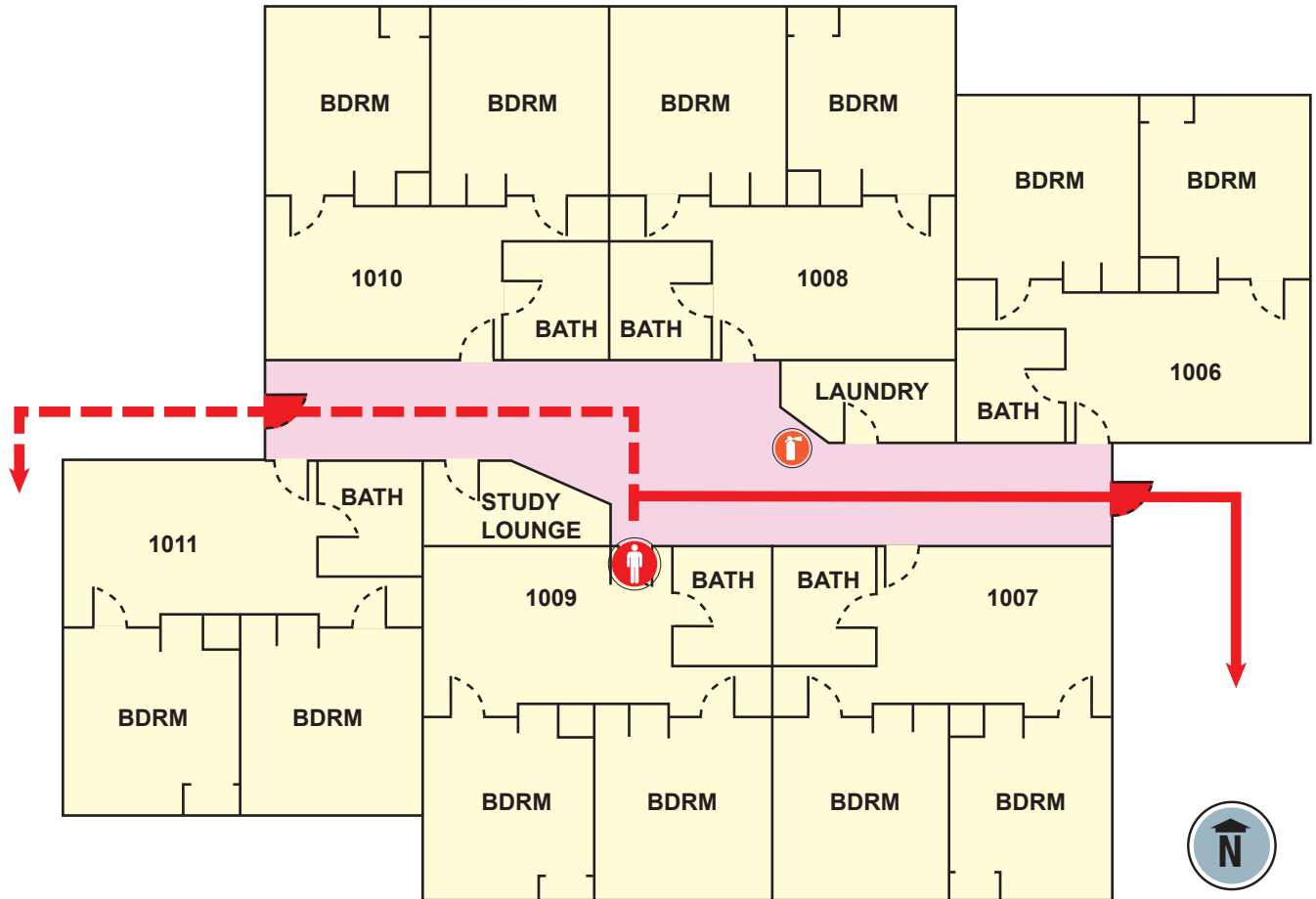


Evacuation Plan

NORTH HALL -2ND FLOOR



IN CASE OF FIRE, EARTHQUAKE OR OTHER EMERGENCY ALL STUDENTS SHOULD PROCEED TO THEIR EMERGENCY ASSEMBLY AREA.



General Information

This guide is intended to help students respond to emergency situations that may occur on the CLU Campus.

Reporting an Emergency

- Call Campus Security at x 3911, state " This is an emergency".
- Give the dispatcher: The nature of the emergency, your Name, your Phone Number, your Location.
- Do not hang up until you are sure no further information is required, unless there is an immediate threat to your safety.

Disaster Preparedness

A personal emergency kit is a very useful tool that can add to your safety and comfort during and after an emergency. You should maintain enough supplies for at least 72 hours. Some important items to include are: Water, blanket, Flashlight, Essential Meds, Change of clothes, Sm. Tool Kit, Heavy Gloves, First Aid Kit, Portable Radio, Extra Batteries, Sturdy shoes, Paper and Pens, and Canned Food.