

# Evacuation Plan

## Floor 1



YOU ARE HERE



FIRE EXTINGUISHER



FIRE ALARM PULL-BOX



EMERGENCY TELEPHONE



PRIMARY EVACUATION ROUTE



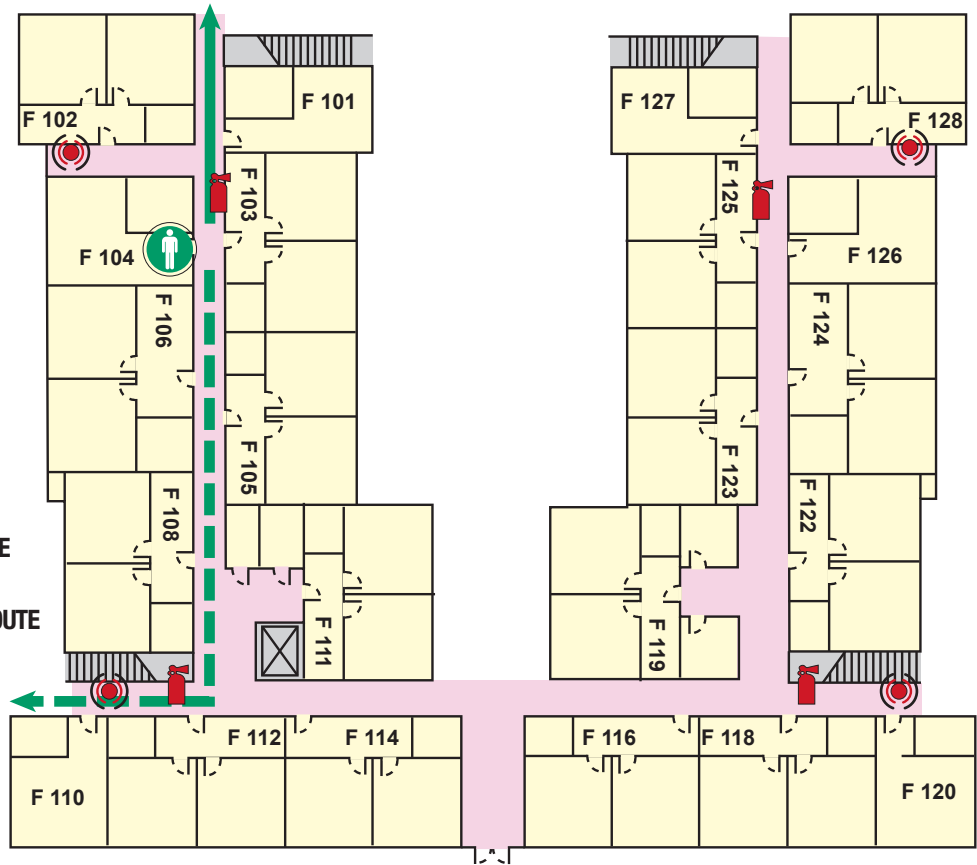
SECONDARY EVACUATION ROUTE



EXIT STAIRWAY

FIRE ALARM SOUND: HORN

VISUAL ALARM: FLASHING LIGHT



**IN CASE OF EMERGENCY DO NOT USE ELEVATORS - USE EXIT STAIRWAYS**



If you hear a fire alarm, feel doors for heat:

**If warm**

- Do not open door
- Place a blanket or towel at the base of the door
- Report your situation by calling 911
- Stay where you are and proceed to an exterior window and call for help

**If normal temperature:**

- Open the door slowly
- Leave and close the door
- Follow the safest exit route



**Fire / Explosion**

- Activate the nearest fire alarm and call 911
- Close your doors to contain the fire
- Go to the safest evacuation point



**In the event of an earthquake:**

- Duck, Cover and Hold
- Keep away from windows
- After the shaking stops, go to the designated evacuation point
- BE PREPARED FOR AFTERSHOCKS



**Shelter in Place**

- Stay in building
- Close and lock windows and doors
- Move to an interior room away from windows
- Do not use elevators
- Remain in the shelter until emergency personnel notifies you otherwise