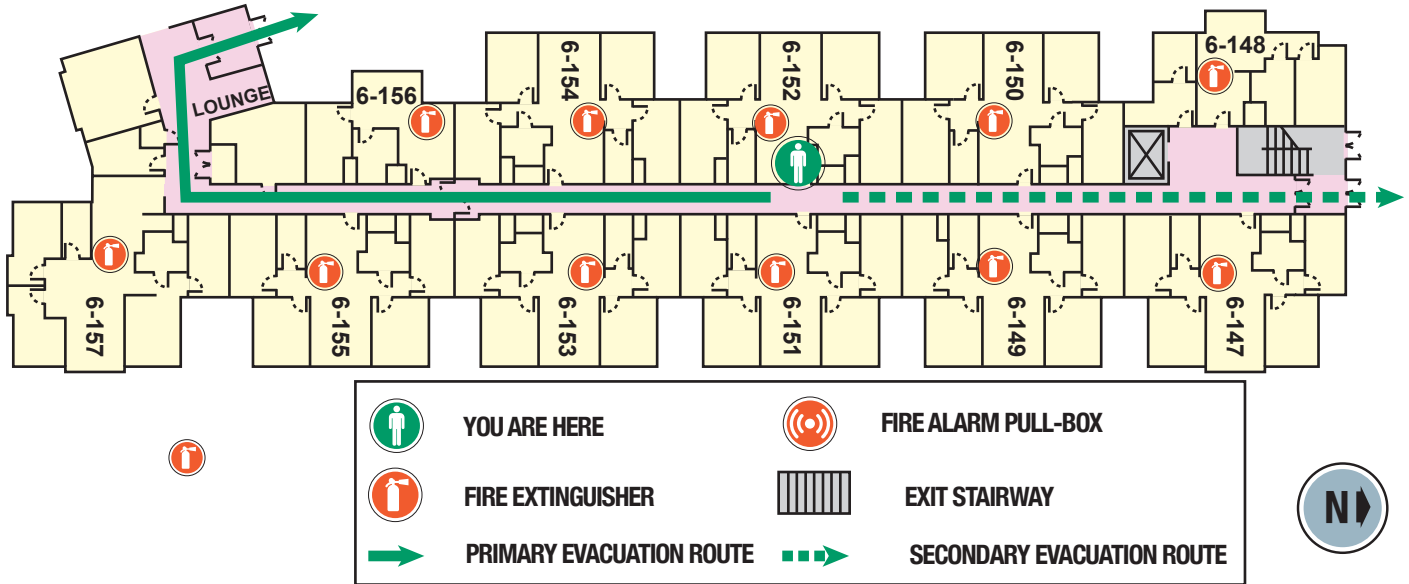


Evacuation Plan

Floor 1



IN CASE OF EMERGENCY DO NOT USE ELEVATORS - USE EXIT STAIRWAYS



If you hear a fire alarm, feel doors for heat before opening:

If warm

- Do not open door
- Place a blanket or towel at the base of the door
- Use phone in unit or cell phone to report your situation by calling 911
- Stay where you are and proceed to an exterior window and call for help

If normal temperature:

- Open the door slowly
- Leave and close the door
- Follow the safest exit route
- Do not return until instructed to do so



If a fire starts that is beyond your control to extinguish:

- Call 911
- Activate the nearest fire alarm pull station
- Close the door as you leave to contain the fire
- Follow the safest exit route



In the event of an earthquake:

- Duck, cover and hold
- Keep away from windows
- Evacuate only after the shaking has stopped



Assist individuals with mobility disabilities to a safe location, i.e. an enclosed stairwell landing



Call 911 on a phone in unit or your cell phone and report the fire location, injuries and trapped or disabled individuals.



Report information concerning the emergency to responding police, fire personnel and Rowan Public Safety.